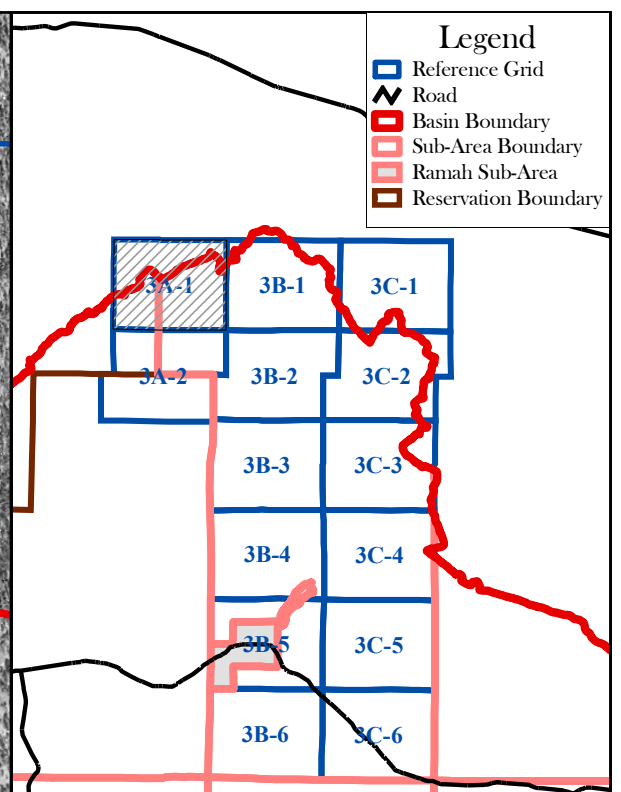
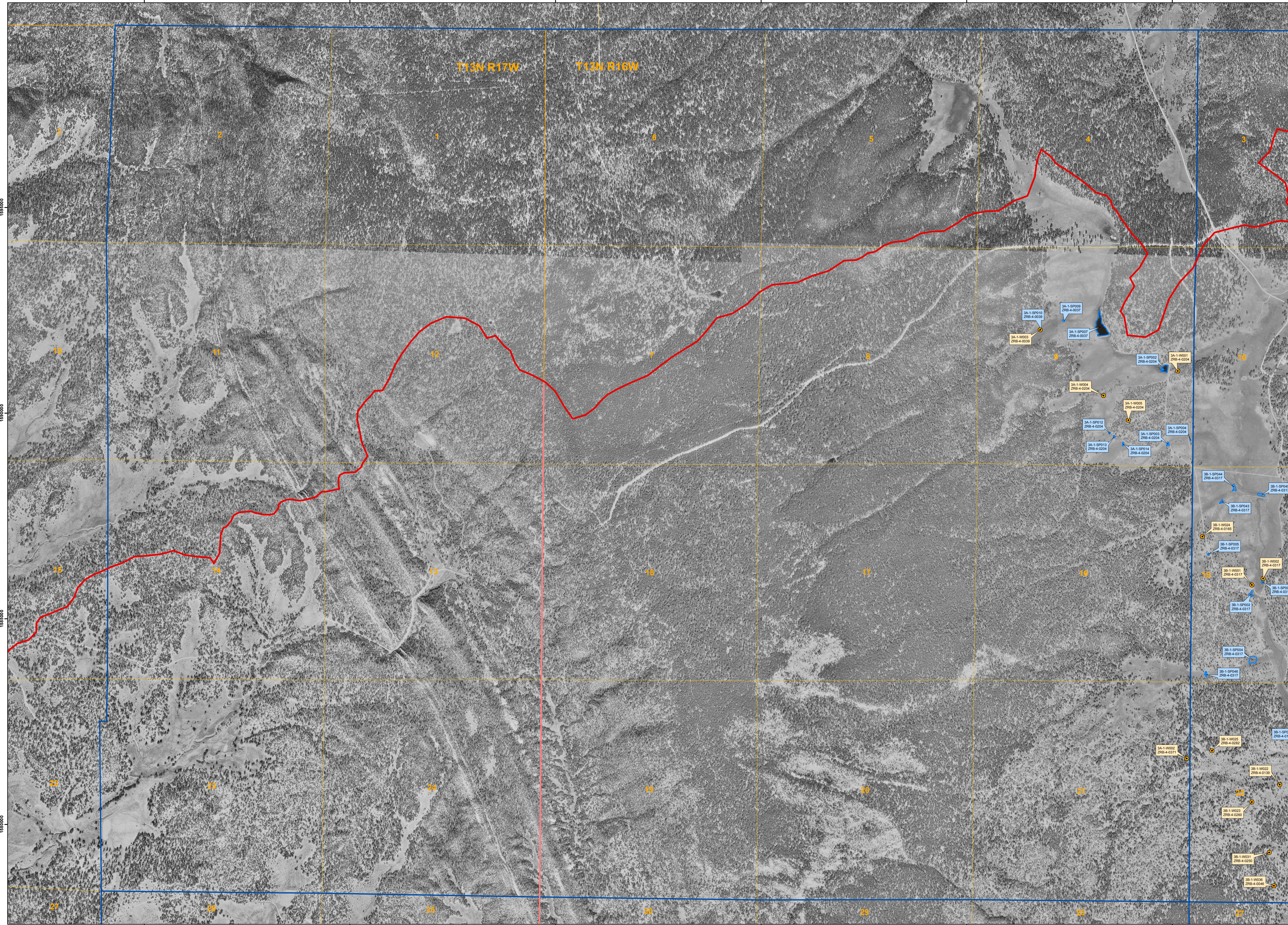


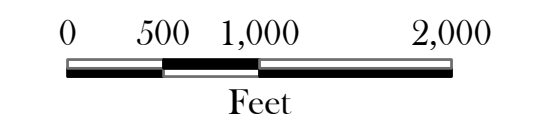
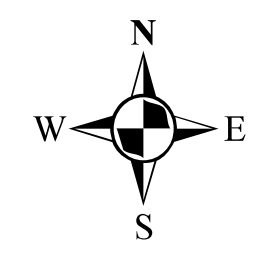
2490000 2495000 2500000 2505000 2510000 2515000



INDEX

LEGEND

- WELL
- SPRING
- STOCKPOND (MAN-MADE)
- POND (NATURAL)
- RESERVATION BOUNDARY
- BASIN BOUNDARY
- SUB-AREA BOUNDARY
- TOWNSHIP/RANGE LINE
- SECTION LINE
- MAP INDEX LINE



August 2006

Labels that are truncated appear on an adjacent map.
 Map is displayed in New Mexico State Plane Coordinate System, West Zone, NAD 1983
 Background Sources:
 USGS Digital Orthophoto Quadrangles (DOQQs), taken October 1997.
 Section, Township, and Range lines received from University of New Mexico GIS web site.

Zuni River Basin Hydrographic Survey
 Map 3A-1 1" = 1,000'

Natural Resources Consulting Engineers, Inc.
 Fort Collins, CO Oakland, CA Asmara, ERITREA
 Project Manager:
 L. Niel Allen, P.E., Ph.D.



2490000 2495000 2500000 2505000 2510000 2515000